

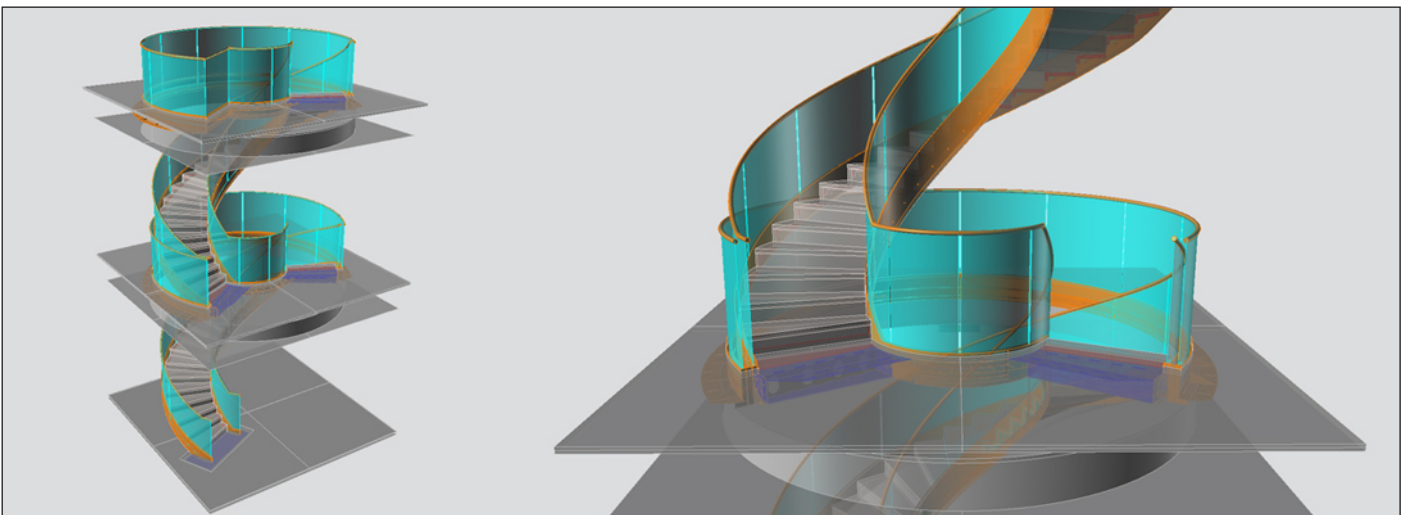
g.West_ Luxury Golf Club House in Gleneagles, Scotland

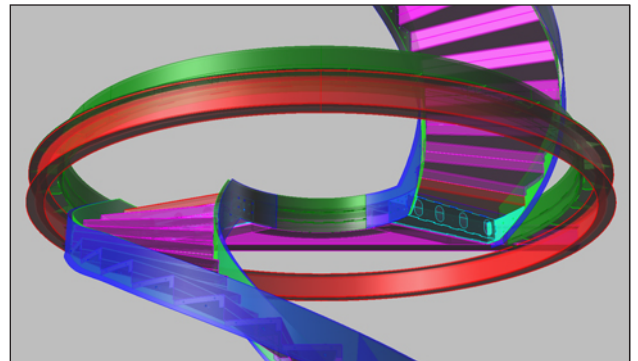
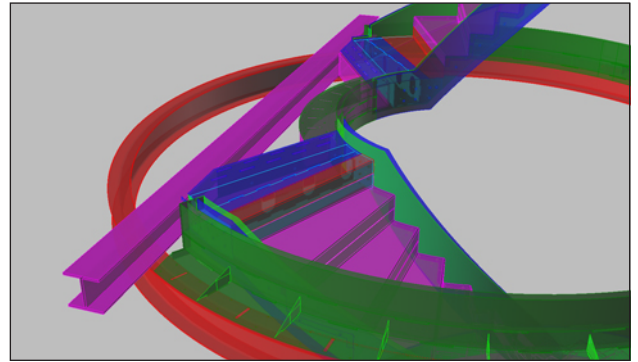
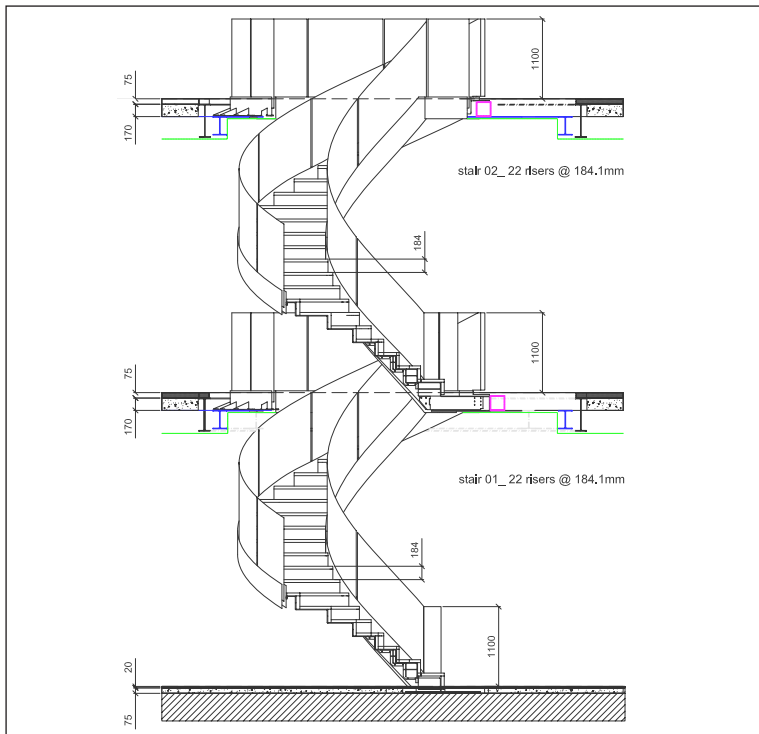


Diapo has been commissioned from the early stage for the design development of a grand feature staircase for the “g.West Clubhouse” a brand new multimillion luxury golfing resort in Gleneagles, Scotland.

The project has now moved into its manufacturing stage and the impressive scale of the 10 meter helical stringers can't help but be appreciated as they dwarf everything else in the workshop.

Make sure to keep your eyes on our news section of our website for more updates and pictures of the build and installation process as it progresses.





Design

This feature helical stair revolves 280 degrees, is self supported and will feature a bronze metallic finish, natural stone and glass balustrade with curved wooden handrail to provide a luxurious and exquisite finish.

While the staircase was designed to be constructed in several easy to assemble parts, allowing for smooth and accurate manufacturing, transportation and installation; Emphasis has been in creating a continuous and homogenous flow throughout the intricate details of the whole entity.

Key design features include the double height stepped ceiling detail, and the landing balustrade which was specially extended to allow for the smoothest possible transition between the stair and landing soffit.

An added feature ceiling detail was designed to emphasize the break between the circular void and kite shaped landing adding an extra dimension to the staircase and to extenuate the break between all the different elements to make this one of a kind staircase.

